



IRRIGATION STATION

100% autonomous 4G Gateway

The irrigation station is a 4G outdoor gateway communicating through its SIM card. It is 100% solar-panel autonomous and pre-equipped with four probes. It is a weather station providing climate and gateway data capable of remotely managing up to 144 stations (24 modules) via LoRa™ radio. Simply transfer your programming and settings to be alerted in real-time from anywhere! You can then group together all your sensor data for visualization.

Fixing



Range to modules

800* m / 875* yds

Compatibilité



Power



Connection



Control

Remote



**Up to 800m range, variable depending on installation configuration.*

INSTALLATION

Installed and wired :

- temperature sensor
- anemometry sensor
- hygrometry sensor
- rain gauge sensor
- sensors module
- 3G / 4G gateway
- Solar panel

The mast is designed to be planted in the ground or fixed on a concrete base
Operating Ambient Temperature :
from -20°C to 60°C

FONCTIONNEMENT

Bluetooth® Smart 4.0 Low Energy
3G/4G communication
LoRa™ radio communication

DIMENSIONS

Width: 51 cm / 20,08 in
Height: 170 cm / 66,93 in
Depth: 48 cm / 18,9 in

3-year
WARRANTY



IRRIGATION STATION

100% autonomous 4G Gateway



Temperature

Thanks to its dedicated temperature input, manage your irrigation installation by determining the ideal irrigation temperatures for your plants.



Anemometer

Optimize your installation by prohibiting irrigation if it is too windy. (Ex : too much wind will irrigate the road instead of the planting of a roundabout).



Rain

No more unnecessarily irrigation thanks to the rain sensor connected to the LR-MS, it will cut off the irrigation of all or part of your irrigation modules.



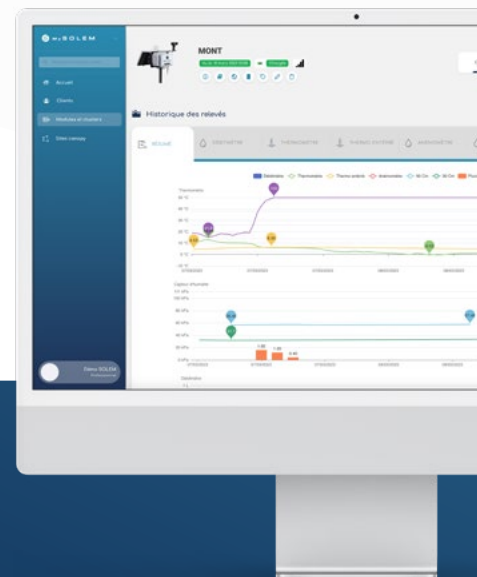
Hygrometry

Perfect your irrigation with accurate air humidity rate.



MAKE IT SIMPLE

Program your irrigation easily with MySOLEM app.
Free & optimized for most devices.



Irrigation professionals can access up-to-date features on our free internet management platform at **MySOLEM.com**.