



LR-MS-ECO KIT

9V Dual Power Sensor Module

The LR-MS-ECO is a battery-powered, waterproof LoRa™ sensor data acquisition module. It also integrates a rechargeable battery via a photovoltaic panel to extend the autonomy of the 9V battery. It can connect a wide range of sensors: weather probes (rain, air humidity, anemometry and temperature) as well as water meters, soil moisture probes, tensiometers, level probes and many others. From the MySOLEM.com platform, you can consult and extract your data, and automate your watering according to the thresholds you set for each sensor.

Compatibility



Inputs

1/4

Power



Connection



Range to gateway

800^{*}_m

Control



*Range may vary depending on the configuration of the installation

INSTALLATION

Rain sensor, anemometer, humidity probe connection, etc.
Compatible with pulse water meter (max. 499Hz)
1 PT100 temperature input (LR-MS 4 only)
Operating temperature:
-4 °F to 251 °F / -20°C to 60°C

OPERATION

100% waterproof (IP68 rated)
9V alkaline battery 6AM6 or 6LR61
Bluetooth® Smart 4.0 Low Energy
Communication in LoRa™ radio
Internal clock backup in case of power failure < 30 s

DIMENSIONS

Width: 5.51 in / 14 cm
Height: 3.54 in / 9 cm
Depth: 2.16 in / 5,5 cm

3 years
WARRANTY



LR-MS-ECO KIT

9V Dual Power Sensor Module



Simple & Complete

Easy and fast to install, easy to use via MySOLEM mobile App (iOS / Android) & Platform.



Control your Water Consumption

Thanks to various compatible sensors compatible with the LR-MS-ECO (such as humidity sensors, tensiometers, water meters, rain gauges, anemometers, and level sensors), it will be easy to water at the right moment, for the right duration, and with the right amount of water



Automate your irrigation

Thanks to the MySOLEM platform, you can stop and start watering automatically based on the thresholds you have set on your sensors and the actions you have defined in the event of exceeded thresholds. Water in good time!



Mini Solar Panel

Connect the mini solar panel to your module to recharge its built-in battery and increase the autonomy of its 9V battery: a longer life for your batteries, a more sustainable product!



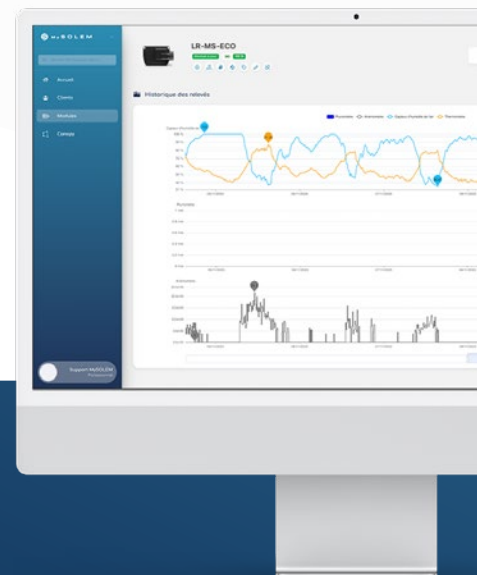
Designed to work with a SOLEM 4G or Wi-Fi gateway

to use all available features such as sensor data upload and water consumption alerts.



MAKE IT SIMPLE

Program your irrigation easily with MySOLEM app.
Free & optimized for most devices.



Irrigation professionals can access up-to-date features on our free internet management platform at **MySOLEM.com**.